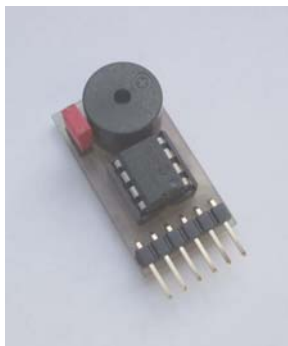


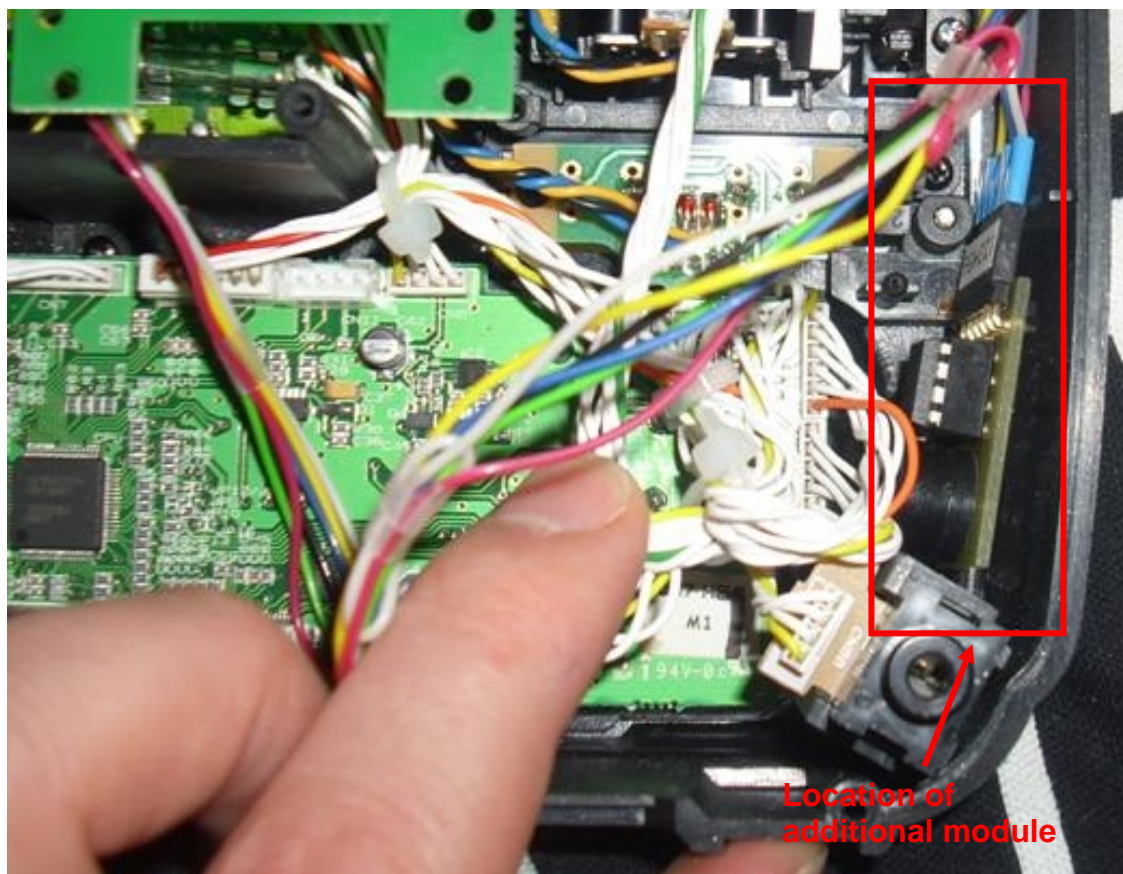
Spektrum DX7 – Additional module for automatic switching of timer by throttle stick



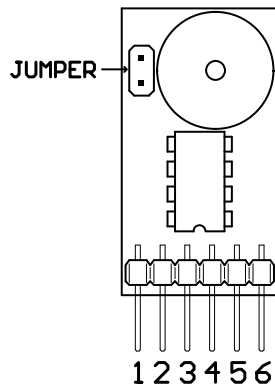
INSTALLATION

The easiest way how to install additional PCB module is to use sandwich tape and attach module on the free area in TX.

Before the soldering is necessary to unscrew 4 screws which holds middle desk of printed circuits with VF module and slide it sideways. By these steps we made a free access to throttle potentiometer – see picture no.3.



Pict. No. 1: Location of additional PCB module in TX



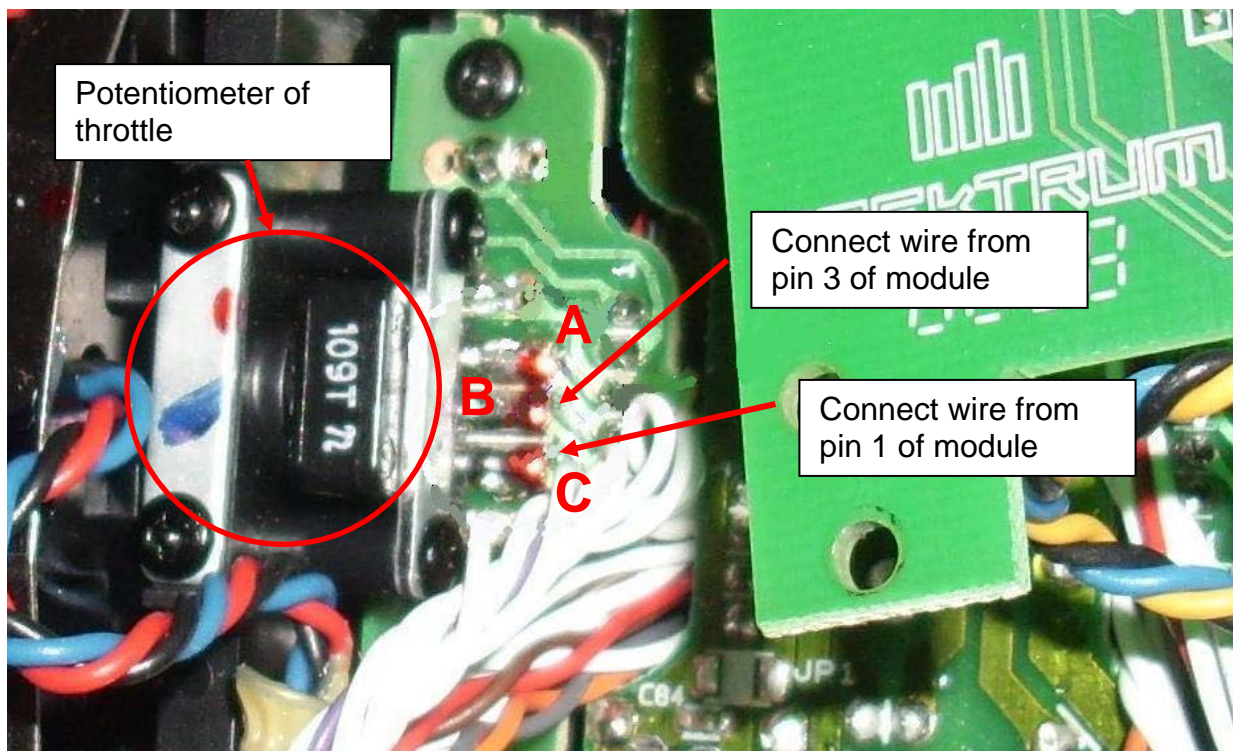
Pict. No. 2: Layout of pins on PCB module – component view

Steps:

Step 1 - Pin 1: Connect (solder) wire from **pin 1** of module to **point C** – see pict. No. 3 (point C is the bottom pin of throttle potentiometer)

Step 2 - Pin 2: Do not connect this pin

Step 3 - Pin 3: Connect (solder) wire from **pin 3** of module to **point B** – see pict. No. 3 (point B is the middle pin of throttle potentiometer)

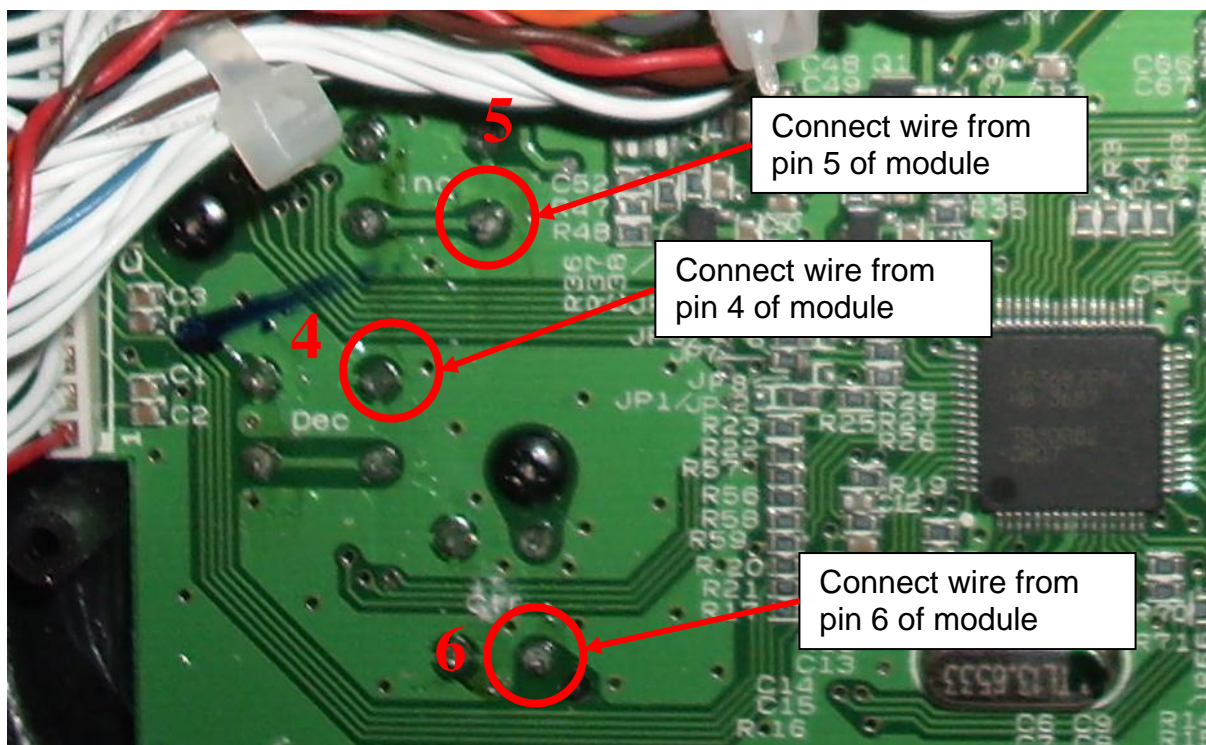


Pict. No. 3: Connecting of wires from pin 1 and pin 3 of module to throttle potentiometer (NOTE: on picture is TX **Mode 1**)

Step 4 - Pin 4: Connect (solder) wire from **pin 4** of module to **point 4** on PCB (on picture No. 4 point marked as 4)

Step 5 - Pin 5: Connect (solder) wire from **pin 5** of module to **point 5** on PCB (on picture No. 4 point marked as 5)

Step 6 - Pin 6: Connect (solder) wire from **pin 6** of module to **point 6** on PCB (on picture No. 4 point marked as 6)



Pict. No. 4: Points for connecting of wires from pins 4, 5, and 6 of module

MANUAL

In menu TIMER select UP or DOWN. When you select DOWN you must set time in minutes and seconds.

During the turning on of the transmitter you can make decision if the auto mode is activated or deactivated. Auto mode can be activated in two different, each other reversible modes. Selected mode depends on selected position of jumper.

	Standard turning on the transmitter	Press and hold CLEAR while turning on the transmitter
Mode A	Automatic ON	Automatic OFF
Mode B	Automatic OFF	Automatic ON

Mode A – jumper is ON (SHORT)

Turn off the transmitter. **Set throttle stick to desired position.** Turn on the transmitter. You will hear standard beep and after one second next six short beeps. Six beeps means ON automatic switching of timer. Now is timer controlled by throttle stick. When you move throttle stick above setting position you will hear standard beep and timer start increment or decrement time (depend UP or DOWN is

set). When you move throttle stick below setting position you will hear standard beep and timer will stop. Do not use INCREASE and DECREASE switches for manual start or stop timer in this state! If you RESET timer by press switch CLEAR and the throttle stick is at that time above setting position the timer will automatic start increment or decrement time (depend UP or DOWN is set). This state is active till turn off the transmitter.

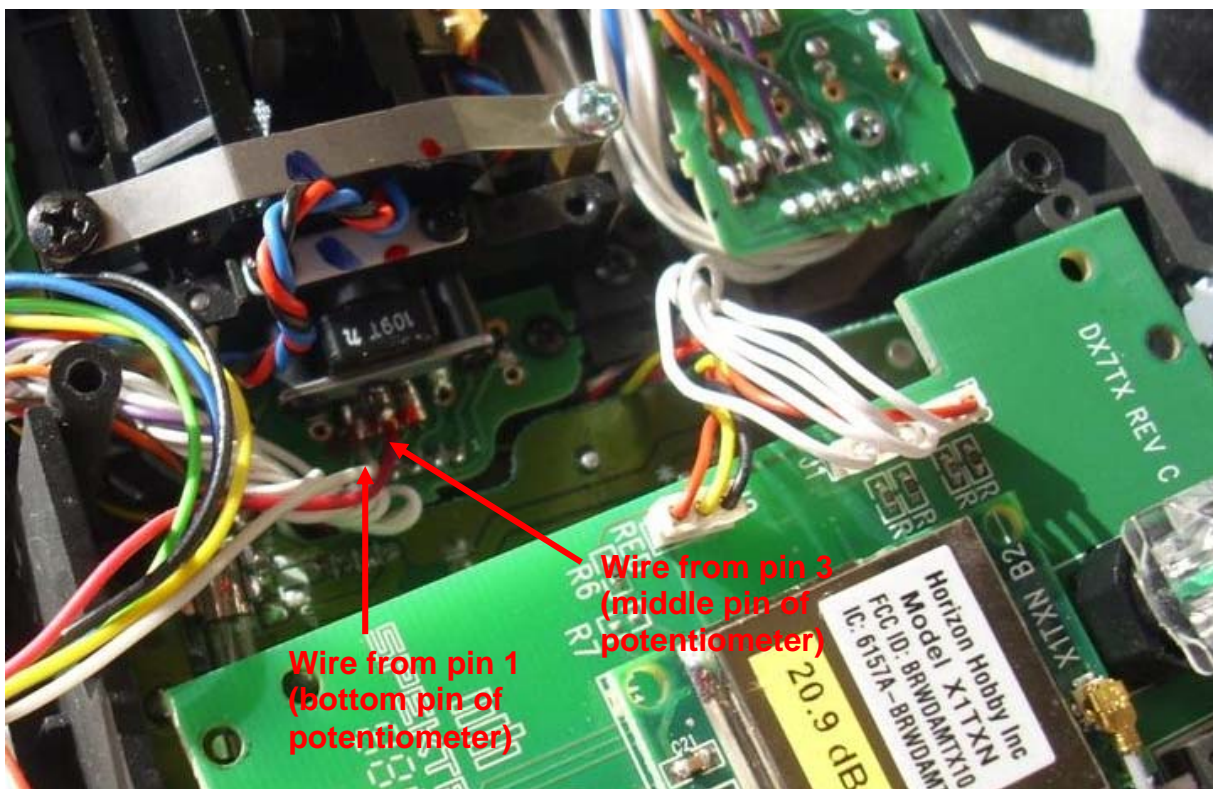
If you need OFF automatic switching of timer in this mode press the CLEAR switch and hold while turning on the transmitter. You will hear standard beep and after one second next two short beeps. Two beeps means OFF automatic switching of timer. Then we can start or stop timer manually by switches INCREASE or DECREASE. This state is active till turn off the transmitter.

Mode B – jumper is OFF (OPEN)

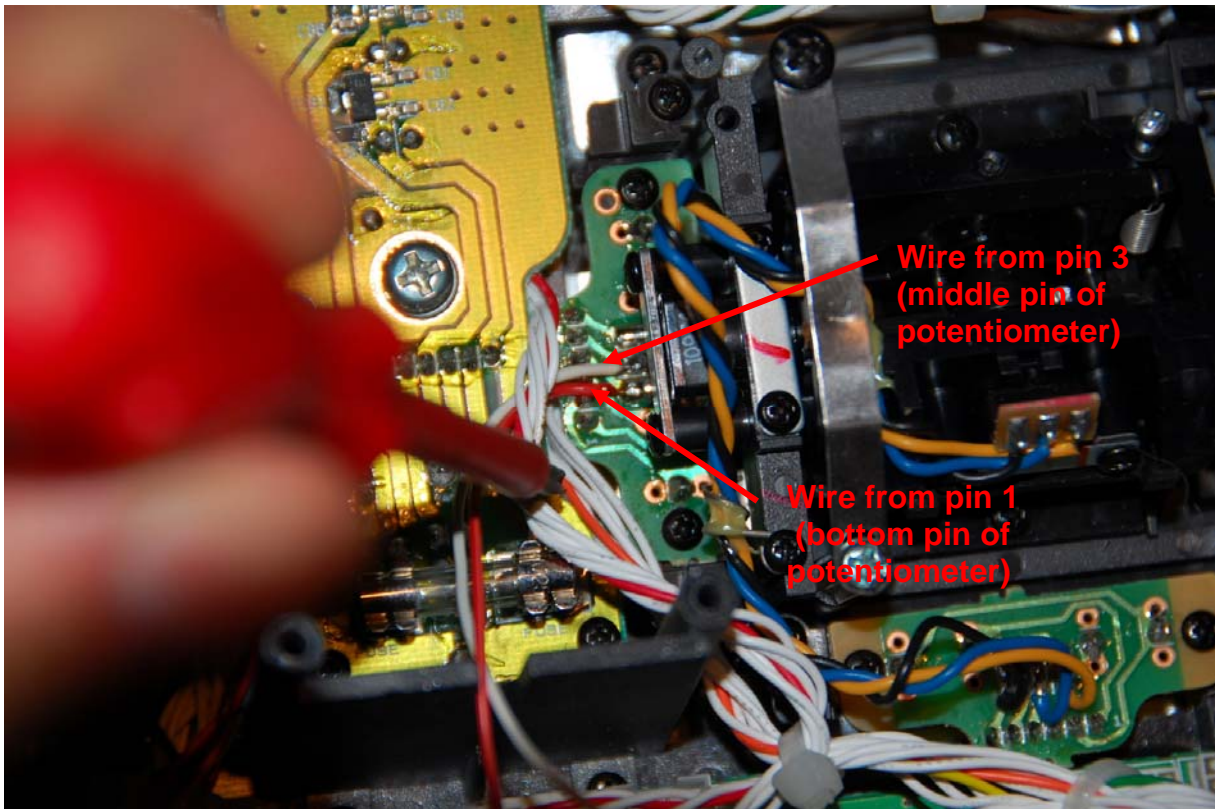
Turn on the transmitter. You will hear standard beep and after one second next two short beeps. Two beeps means OFF automatic switching of timer. Then we can start or stop timer manually by switches INCREASE or DECREASE. This state is active till turn off the transmitter.

If you need ON automatic switching of timer in this mode you have to set throttle stick to desired position, press the CLEAR switch and hold while turning on the transmitter. You will hear standard beep and after one second next six short beeps. Six beeps means ON automatic switching of timer. Next activity is same as in point “Mode A”.

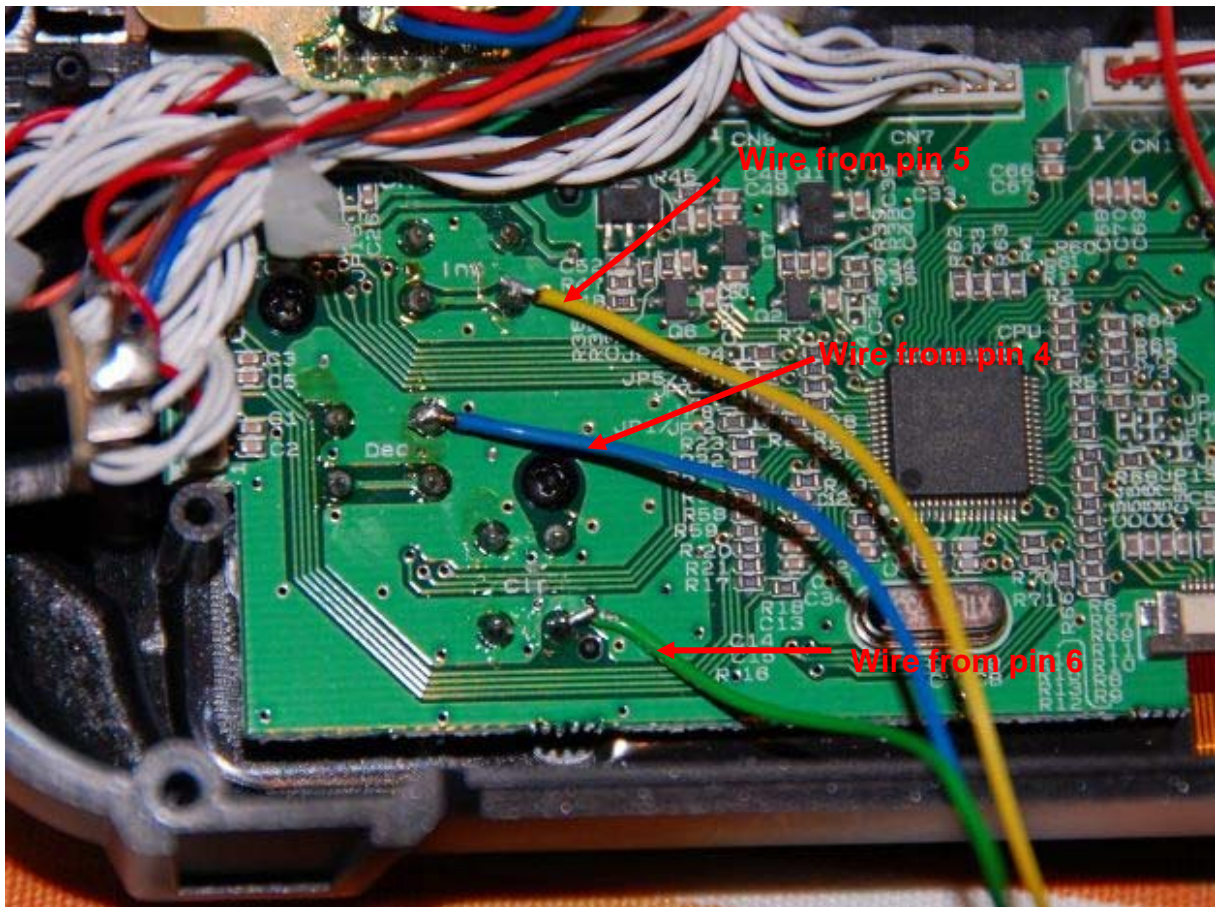
Note: Do not use INCREASE and DECREASE switches for manual start or stop timer if automatic switching of timer is active. If you press one of these switches you have to press one of these switches again to get regular state of timer.



Pict. No. 5: Connecting of wires from pin 1 and pin 3 of module to throttle potentiometer (NOTE: on picture is TX **Mode 1**)



Pict. No. 6: Connecting of wires from pin 1 and pin 3 of module to throttle potentiometer (NOTE: on picture is TX **Mode 2**)



Pict. No. 7: Connecting of wires from pins 4, 5 and 6 of module

WARNING:

When programming the transmitter, be sure the autotimer function is turned OFF.
When the automatic of timer is active, moving the throttle stick is like pushing the INCREASE switch and will affect the programming.

Author is not responsible for any damage occurred during the installation or using of device.

NEW: Now also available version of module for TX with reversed throttle.

PRICE:

For Slovakia and Czech Republic – 10,00 Euro's (including wiring material and shipping cost).

For others countries - 12,30 Euro's (including wiring material and shipping cost).

Contact: jaromacko100@gmail.com