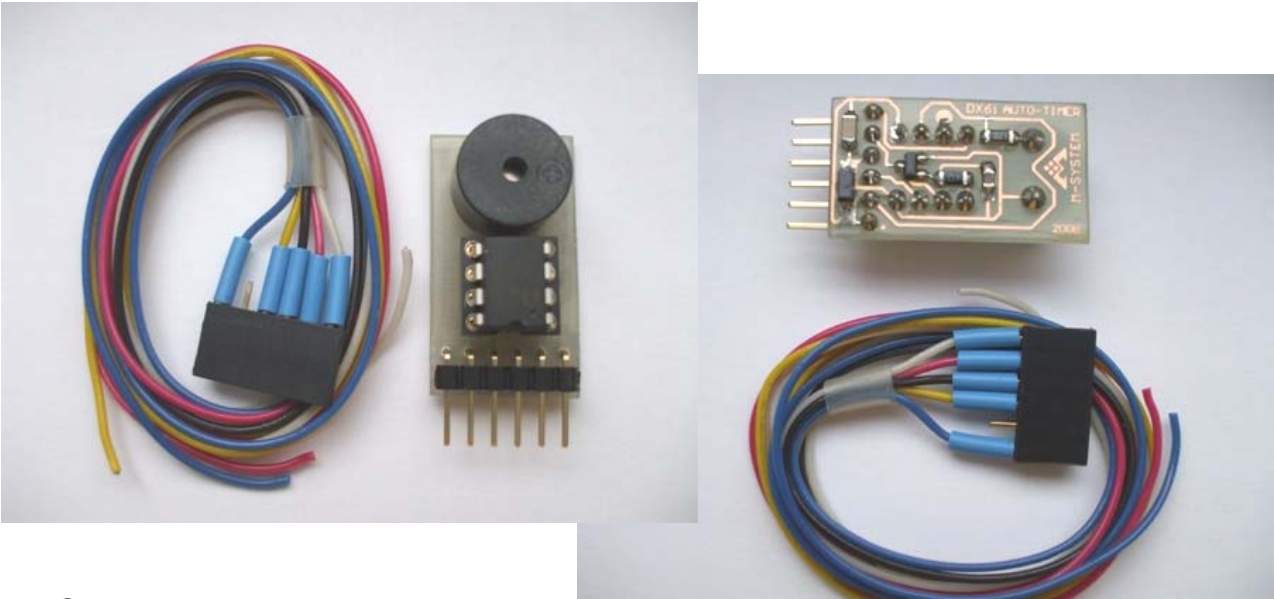
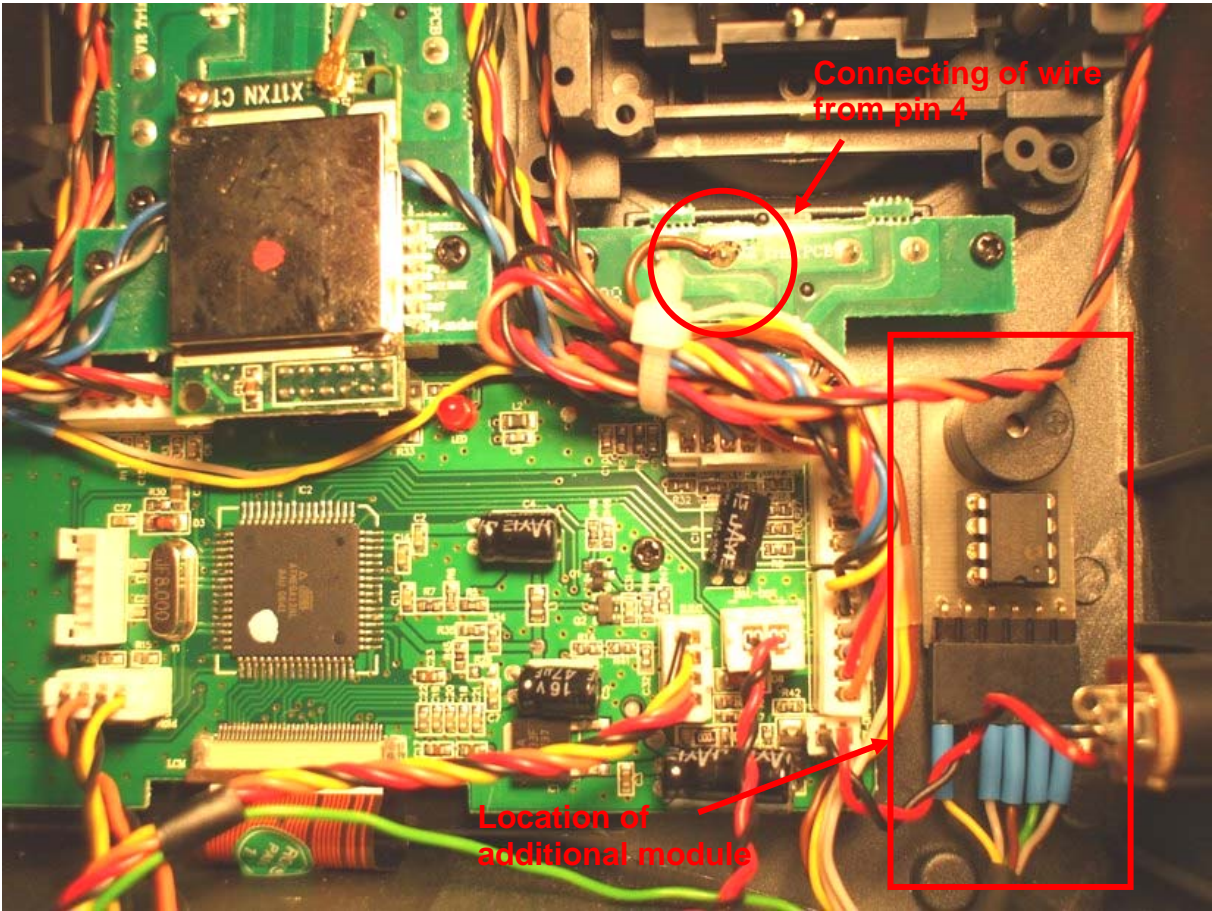


Spektrum DX6i – Additional module for automatic switching of timer by throttle stick

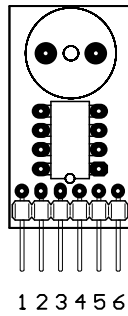


INSTALLATION

The easiest way how to install additional PCB module is to use sandwich tape and attach module on the free area next to charge connector.



Pict. No. 1: Location of additional PCB module in TX – next to charger connector



Pict. No. 2: Layout of pins on PCB module – component view

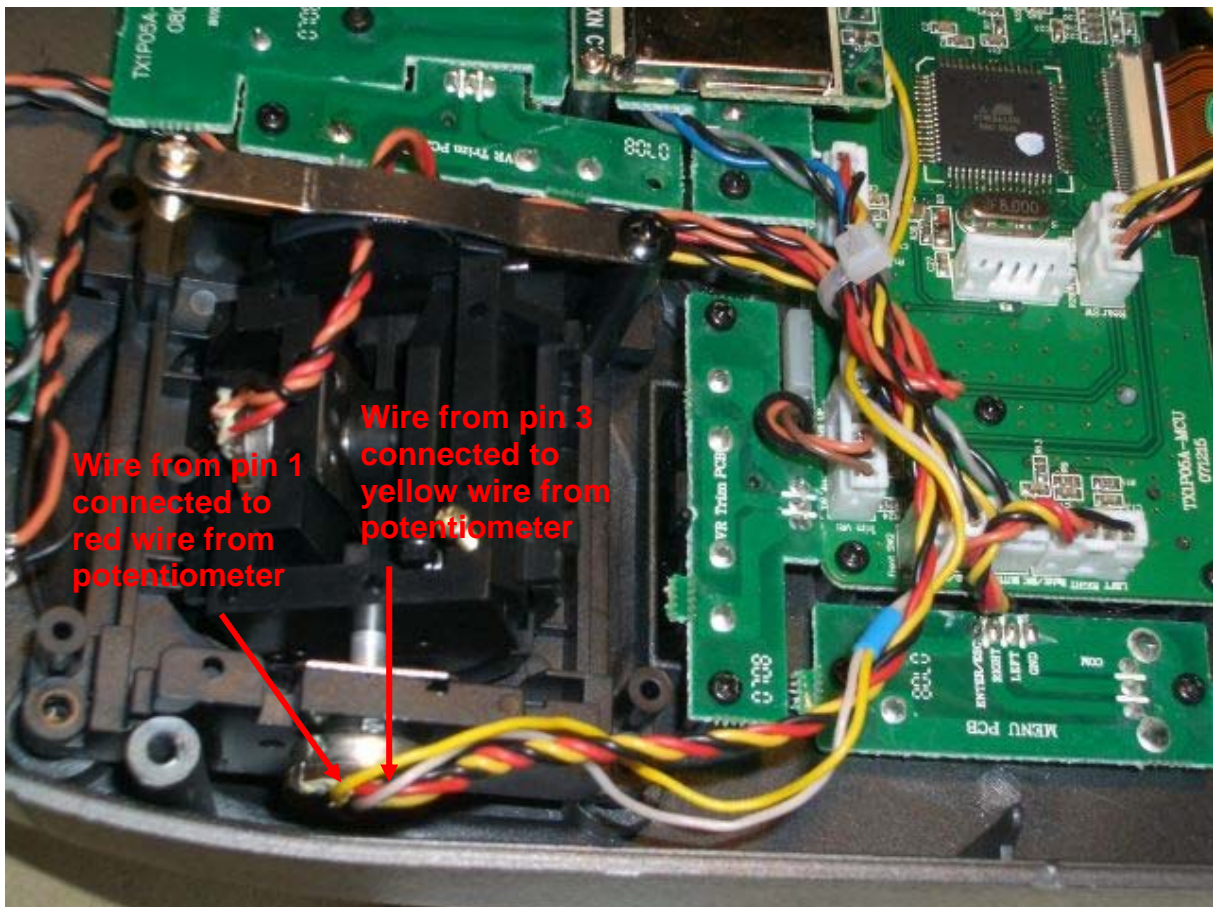
Steps:

NOTE: Colours of wires from additional PCB module may be various. Colours noted below are colours of wires original installed in TX.

Step 1 - Pin 1: Connect (solder) wire from **pin 1** of module to **RED** wire from potentiometer of throttle. The best for it is to move stick assembly in direction of inside TX.

Step 2 - Pin 2: Do not connect this pin

Step 3 - Pin 3: Connect (solder) wire from **pin 3** of module to **YELLOW** wire from potentiometer of throttle. The best for it is to move stick assembly in direction of inside TX.

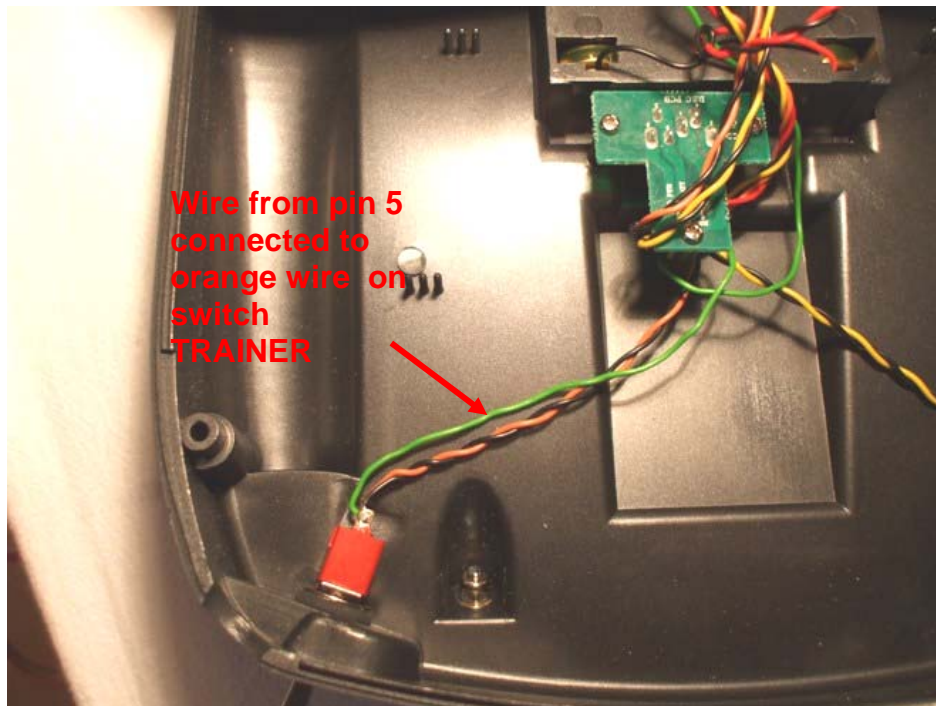


Pict. No. 3: Connecting of wires from pin 1 and pin 3 to potentiometer of throttle (NOTE: on picture is TX Mode 1)

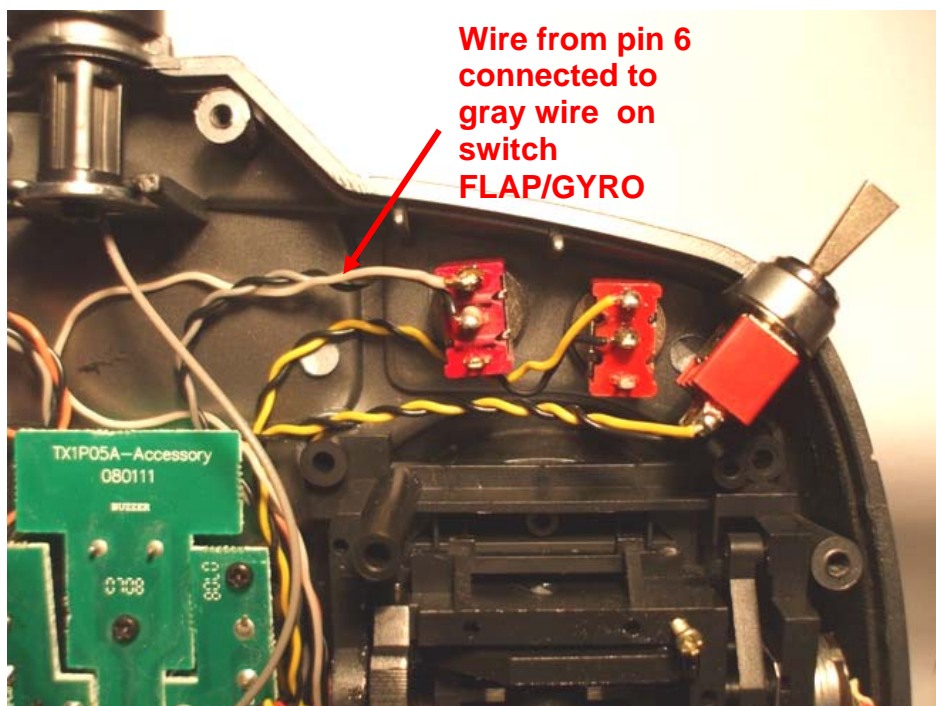
Step 4 - Pin 4: Connect (solder) wire from **pin 4** of module to PCB of bottom left trim next to text „VR Trim PCB“ – on Picture No. 1 see red circle.

Step 5 - Pin 5: Connect (solder) wire from **pin 5** of module to switch TRAINER – to wire that **is not black** – in picture No. 4 it is **ORANGE** wire.

Step 6 - Pin 6: Connect (solder) wire from **pin 6** of module to switch FLAP/GYRO – to wire that **is not black** – in picture No. 5 it is **GRAY** wire.



Pict. No. 4: Connecting of wires from pin 5 to switch TRAINER (NOTE: on picture is TX Mode 1)



Pict. No. 5: Connecting of wires from pin 6 to switch FLAP/GYRO (NOTE: on picture is TX Mode 1)

MANUAL

In menu SETUP LIST / TIMER select UP or DOWN. When you select DOWN you must set time in minutes and seconds. In Switch Options **you must select TRAINER.**

Switch FLAP/GYRO will be used for activate or deactivate automatic switching of timer – this function of switch FLAP/GYRO **is active only during turning on the transmitter.** After this we can use this switch for initial function.

- 1. Automatic switching of timer OFF** – Turn off the transmitter. Turn switch FLAP/GYRO to position „0“ and turn on the transmitter. You will hear three standard beeps and after one second next one short beep. One beep means OFF automatic switching of timer. Then we can start or stop timer manual by switch TRAINER. Switch FLAP/GYRO we can use according to transmitter manual. This state is active till turn off the transmitter.
- 2. Automatic switching of timer ON** – Turn off the transmitter. Turn switch FLAP/GYRO to position „1“. **Set throttle stick to desired position.** Turn on the transmitter. You will hear three standard beeps and after one second next six short beeps. Six beeps means ON automatic switching of timer. Now is timer controlled by throttle stick. When you move throttle stick above setting position you will hear standard beep and timer start increment or decrement time (depend UP or DOWN is set). When you move throttle stick below setting position you will hear standard beep and timer will stop. Do not use switch TRAINER for manual start or stop timer in this state. If you RESET timer by press and hold switch TRAINER for more than 2 seconds and throttle stick is at that time above setting position the timer will automatic start increment or decrement time (depend UP or DOWN is set). In this state we can use switch FLAP/GYRO according to transmitter manual too. This state is active till turn off the transmitter.
- 3.** During “binding” you have to switch on transmitter with button TRAINER in “ON position”. If this condition is executed “automatic mode” will not start even the switch FLAP/GYRO is in the position “1” during the turning on transmitter. After “binding” you have to turn off transmitter and if you want turn on “automatic mode”, turn on transmitter with switch FLAP/GYRO enabled.
- 4.** For range test (you have to use switch TRAINER again), is necessary to have transmitter in “automatic mode” turned off.

Author is not responsible for any damage occurred during the installation or using of device.

PRICE: 12,19 €(including wiring material and shipping cost)